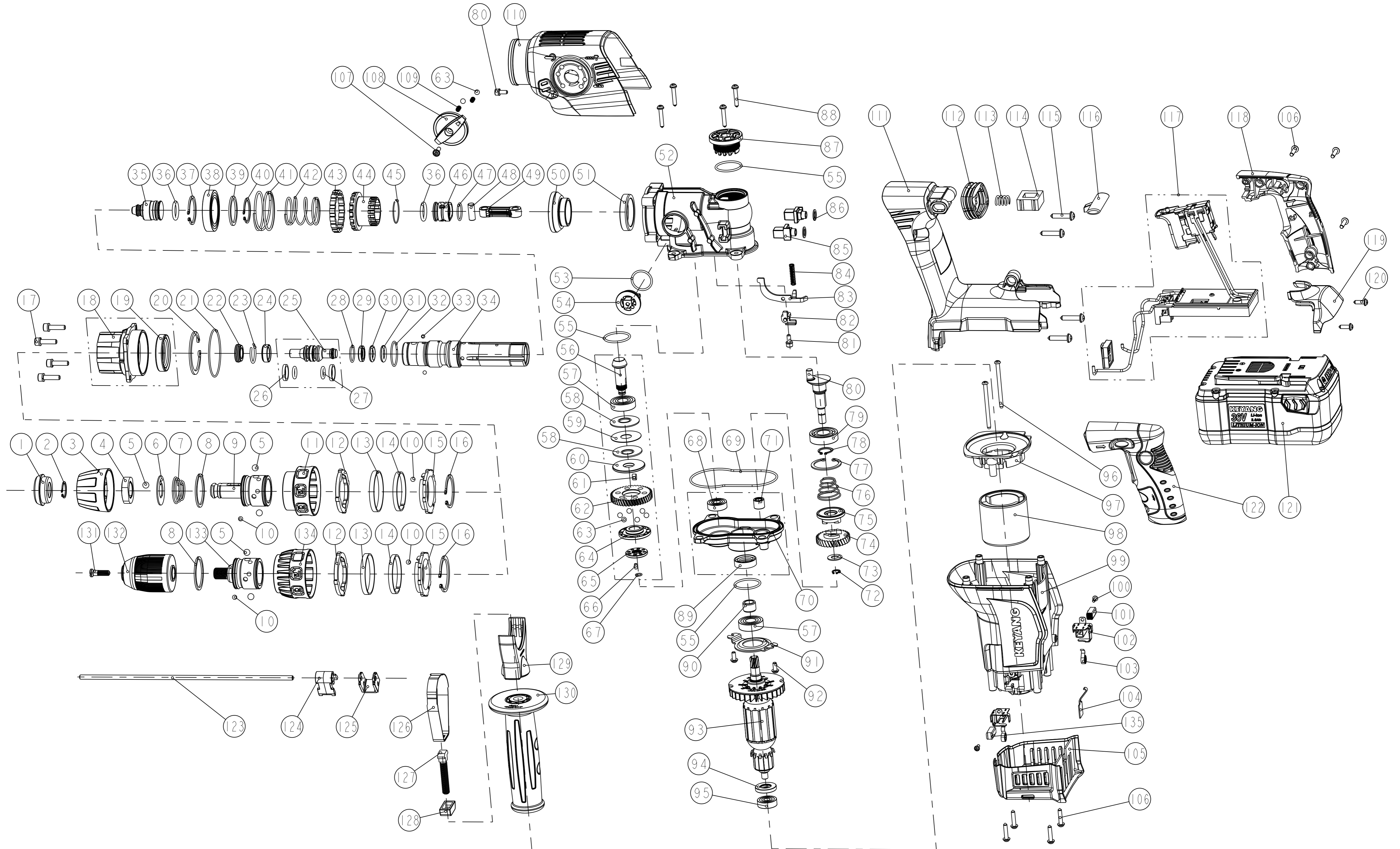


DH-3600L

36V CORDLESS HAMMER DRILL

2012. 04. 30



PARTS

DH-3600L

Item no.	Part no.	Description	Q'ty	RSP (%)	Remark
1	2072619	DUST CAP	1	0.5	
2	2412013	RETAINING RING(D17)	1		
3	2135087	RETAINER	1	0.5	
4	2200832	HOLDER BUSH	1	1	
5	2416028	STEEL BALL	5	0.3	
6	2065205	BALL SUPPORT PLATE	1	1	
7	2411913	TOOL HOLDER SPRING	2	0.1	
8	2412099	SNAP RING(D35)	1		
9	2023704	TOOL HOLDER	1	0.5	
10	2416029	STEEL BALL	4	0.5	
11	2135088	QUICK CHANGE COVER	1	0.5	
12	2200831	QUICK CHANGE BUSH	2	0.1	
13	2412458	QUICK CHANGE DAMPER	2	0.1	
14	2065212	LOCATION SPRING	2	0.1	
15	2110911	LOCATION PLATE	2	0.1	
16	2412029	RETAINING RING(D35)	2		
17	2400929	HEX SOC HD B & SW(SCM4,M5*20,C	4		
18	2042020	CYLINDER CASE	1	0.5	
19	2413036	OIL SEAL	1	1.5	
20	2412097	RETAINING RING(D47)	1		
21	2412454	O-RING(D)	1	0.5	
22	2070548	DAMPER(C)	1	0.5	
23	2064288	RING SPRING(A)	1	1	
24	2038205	ANVIL WASHER(B)	1	0.1	
25	2038203	ANVIL	1		
26	2412904	ANVIL RING	2		
27	2412451	O-RING(A)	2		

* RSP : Recommended Spare Part

PARTS

DH-3600L

Item no.	Part no.	Description	Q'ty	RSP (%)	Remark
28	2064289	RING SPRING(B)	1	1	
29	2038204	ANVIL WASHER(A)	1	0.1	
30	2070546	DAMPER(A)	1	1.5	
31	2070547	DAMPER(B)	1	1.5	
32	2064291	RING SPRING(D)	1	0.1	
33	2416031	STEEL BALL	2	0.1	
34	2031016	CYLINDER	1	0.5	
35	2036021	STRIKER	1	0.5	
36	2412452	O-RING(B)	2	2	
37	2412025	RETAINING RING(D30)	1		
38	2417965	BALL BEARING	1	2	
39	2065210	CLUTCH SPRING WASHER	1	0.1	
37	2412025	RETAINING RING(D30)	1		
41	2411908	CLUTCH HOLDER SPRING	1	0.1	
42	2411909	CLUTCH SPRING	1	0.1	
43	2110912	CLUTCH HOLDER	1	1	
44	2030524	CLUTCH	1	0.5	
45	2064290	RING SPRING(C)	1	0.5	
46	2112710	PISTON	1	1	
47	2412457	O-RING(G)	1	0.5	
48	2033814	PISTON PIN	1	0.5	
49	2112711	CONNECTING ROD	1	1	
50	2024360	FINAL GEAR	1	0.5	
51	2200829	METAL BUSH	1		
52	2041317	CRANK CASE	1		
53	2412456	O-RING(F)	1	0.5	
54	2130414	CHANGE LEVER CAM	1	1	

* RSP : Recommended Spare Part

PARTS

DH-3600L

Item no.	Part no.	Description	Q'ty	RSP (%)	Remark
55	2412453	O-RING(C)	3	0.5	
56	2024361	SECOND PINION	1	0.5	
57	2417005	BALL BEARING	2	2	
58	2065209	DISK SPRING	2	0.5	
59	2065208	SLIP PLATE	1	0.3	
60	2038207	SAFETY CLUTCH BASE(B)	1	0.3	
61	2408025	FEATHER KEY	1	0.3	
62	2024359	SECOND GEAR	1	0.3	
63	2416030	STEEL BALL	8	0.1	
64	2038206	SAFETY CLUTCH BASE(A)	1	0.1	
65	2038208	LOCK NUT	1	0.1	
66	2406033	HEX SOC SET SCREW(M3*6)	1		
67	2412381	O-RING(B),DGJ-180FA	1	0.1	
68	2417156	BALL BEARING	1		
69	2412455	O-RING(E)	1	0.5	
70	2043472	GEAR COVER	1		
71	2417309	NEEDLE BEARING	1		
72	2412037	RETAINING RING(D8)	1		
73	2060615	WASHER(B)(SK-5,T1*OD16.5),JSV-60	1	0.5	
74	2024358	FIRST GEAR	1	0.5	
75	2200830	DRILLING CLUTCH	1	0.5	
76	2411910	DRILLING CLUTCH SPRING	1	0.1	
77	2412026	RETAINING RING(D32)	1		
78	2412010	RETAINING RING(D15)	1		
79	2417007	BALL BEARING	1	2	
80	2021261	CRANK SHAFT	1	0.5	
81	2400902	HEX SOC HD B & SW(SCM4,M4*10)	2		

* RSP : Recommended Spare Part

PARTS

DH-3600L

Item no.	Part no.	Description	Q'ty	RSP (%)	Remark
82	2110913	CHANGE ROD SUPPORT	1	0.5	
83	2065203	CHANGE ROD	1	0.1	
84	2411911	CHANGE ROD SPRING	1	0.1	
85	2131727	HANDLE JOINT	2	0.5	
86	2074140	HANDLE JOINT RUBBER	2	0.5	
87	2155056	OIL CAP	1	0.5	
88	2405126	+PAN HD TAP S & PW(M4*25)	4		
89	2413034	OIL SEAL	1	1	
90	2030352	OIL SEAL BUSH	1	0.5	
91	2065204	BEARING COVER	1	0.5	
92	2404301	+PAN HD M/C S & PW(M4*10)	2		
93	3005828	ARMATURE ASS'Y	1	2	
94	2170210	DUST PLATE	1	1	
95	2417266	BALL BEARING	1	2	
96	2405153	+PAN HD TAP S & PW(M4*55)	2		
97	2130926	FAN GUIDE	1	0.1	
98	3019907	STATOR ASS'Y	1	2	
99	2141179	HOUSING	1	1	
100	2405101	+PAN HD TAP S & PW(M3*10)	2		
101	2011183	CARBON BRUSH	2	3	
102	3100932	BRUSH HOLDER ASS'Y	2	3	
103	2411907	SPIRAL SPRING	2	0.5	
104	2065211	BATTERY RETURN SPRING	1	0.5	
105	2155055	END COVER	1	0.5	
106	2405125	+PAN HD TAP S & PW(M4*20)	7		
107	2405104	+PAN HD TAP S & PW(M4*16)	1		
108	2130415	CHANGE LEVER	1	0.1	

* RSP : Recommended Spare Part

PARTS

DH-3600L

Item no.	Part no.	Description	Q'ty	RSP (%)	Remark
109	2411912	CHANGE LEVER SPRING	1	0.5	
110	2141531	CRANK CASE COVER	1	0.1	
111	2140845	HANDLE	1	0.1	
112	2070545	BELLOWS	1	0.5	
113	2411111	DAMPER SPRING	1	0.1	
114	2070533	DAMPER(A),KH-50H	1	0.1	
115	2405167	+PAN HD TAP S & PW(M5*25)	4		
116	2115166	REVERSE KNOB	1	0.1	
117	2007220	CONTROLLER ASS'Y	1	0.1	
118	2140847	HANDEL(R)	1		
119	2140846	HANDLE COVER	1	1	
120	2405130	+PAN HD TAP S & PW(M4*14)	2		
121	3115826	BATTERY PACK ASS'Y	2	0.1	
122	2140848	HANDLE(L)	1		
123	2035912	STOPPER	1		
124	2110909	STOPPER HOLDER FIXED	1	1	
125	2110908	STOPPER HOLDER	1	0.5	
126	2065213	BAND	1	0.5	
127	2402866	T-BOLT	1	0.5	
128	2110907	BOLT HOLDER	1	0.5	
129	2110906	BAND HOLDER	1	0.5	
130	2125029	SIDE HANDLE	1	0.5	
131	2404806	SPECIAL SCREW	1	0.5	
132	2456123	KEYLESS CHUCK	1	0.1	
133	2023705	ADAPTER TOOL HOLDER	1	0.5	
134	2135089	ADAPTER COVER	1	0.1	
135	2011386	CARBON BRUSH(AUTO-STOP)	1	3	

* RSP : Recommended Spare Part

