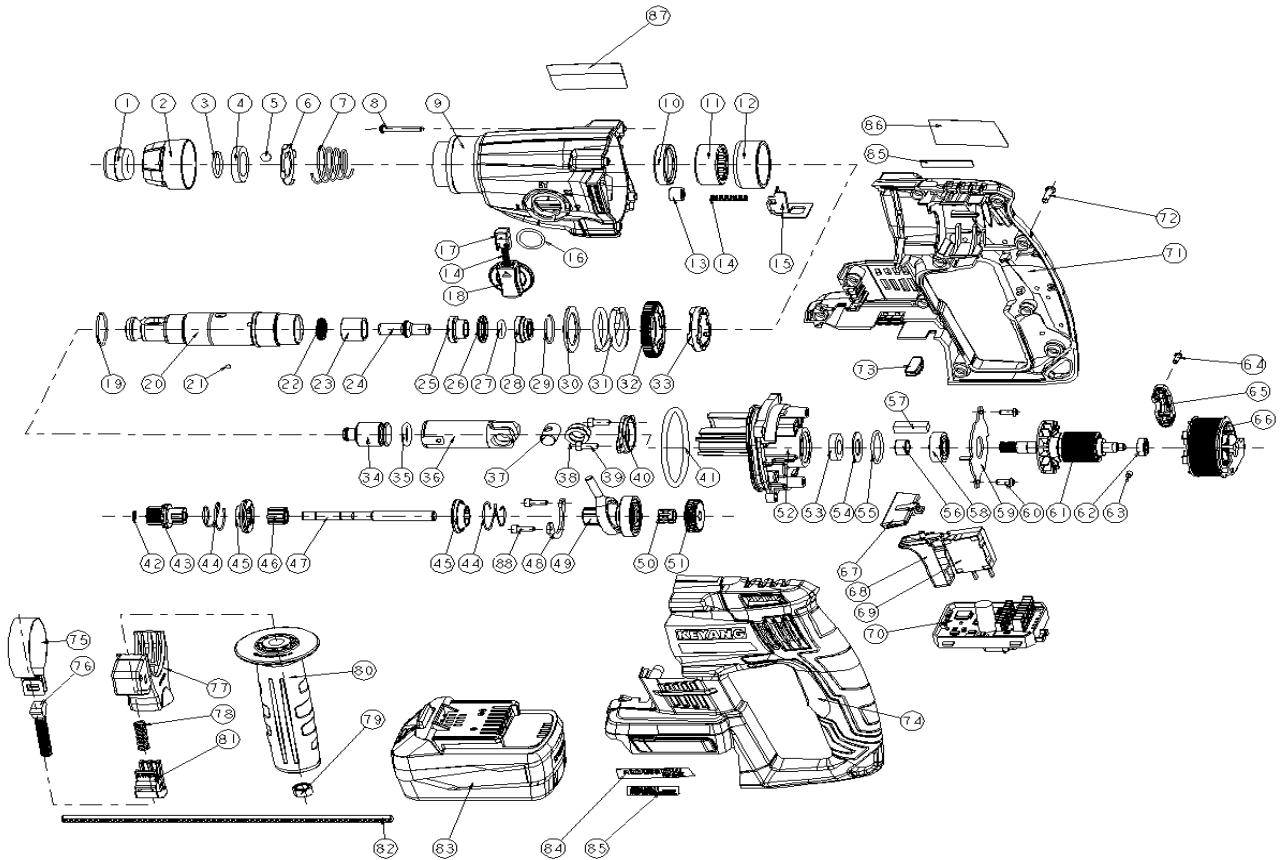


**HD18BL AS PART LIST**  
**HD18BL(BR,CE,18V,5.0Ah) - 8070004**



**PARTS**

HD18BL

Item no.	Part no.	Description	Q'ty	RSP (%)	Remark
1	2074142	DUST COVER	1		
2	2130117	TOOL HOLDER COVER	1		
3	2064294	HOLDER RING	1		
4	2050637	HOLDER BUSH	1		
5	2416023	STEEL BALL(ø7.14)	1		
6	2064263	BALL SUPPORT PLATE	1		
7	2411883	SPRING B	1		
8	2405179	+PAN TAP SCREW(M4*30)	4		
9	2140422	GEAR COVER	1		
10	2413020	OIL SEAL	1		
11	2417387	NEEDLE BEARING(HK2816)	1		
12	2200849	NEEDLE BEARING HOUSING	1		
13	2417218	NEEDLE BEARING(HK0709)	1		
14	2411985	LOCK BUTTON SPRING	2		
15	2050639	LOCKING PLATE	1		
16	2412477	O-RING CHANGE LEVER	1		
17	2140641	LOCK BUTTON	1		
18	2110491	CHANGE LEVER	1		
19	2411983	RING SPRING A	1		
20	2031021	CYLINDER	1		
21	2038728	STEEL BALL(ø3)	4		
22	2070528	ANVIL DAMPER	1		
23	2030161	ANVIL BUSH	1		
24	2030160	ANVIL	1		
25	2030162	DAMPER BUSH A	1		
26	2412474	O-RING DAMPER	1		
27	2412475	O-RING CATCHER	1		

\* RSP : Recommended Spare Part

**PARTS**

Item no.	Part no.	Description	Q'ty	RSP (%)	Remark
28	2030163	DAMPER BUSH B	1		
29	2411984	DAMPER RING SPRING	1		
30	2050638	SAFETY CLUTCH WASHER	1		

31	2411982	SAFETY CLUTCH SPRING	1		
32	2200846	FINAL GEAR	1		
33	2200847	SAFETY CLUTCH DISC	1		
34	2036027	STRIKER	1		
35	2412473	O-RING STRIKER	1		
36	2033920	PISTON	1		
37	2033817	PISTON PIN	1		
38	2060808	PISTON PIN WASHER	2		
39	2400816	HEX SOC BOLT(M4*16)	4		
40	2200848	INNER COVER BUSH	1		
41	2412476	O-RING INNER COVER	1		
42	2412104	SNAP RING(ISTW-7)	1		
43	2024380	SECOND GEAR	1		
44	2411981	CLUTCH A SPRING	2		
45	2200845	CLUTCH A	2		
46	2200844	CLUTCH	1		
47	2020814	DRIVING SHAFT	1		
48	2050635	BEARING COVER A	1		
49	2417832	SWASH BEARING	1		
50	2417376	NEEDLE ROLLER	1		
51	2024381	FIRST GEAR	1		
52	2044705	INNER COVER	1		
53	2054240	BEARING FELT	1		
54	2050209	FELT WASHER(T1)	1		

\* RSP : Recommended Spare Part

#### PARTS

Item no.	Part no.	Description	Q'ty	RSP (%)	Remark
55	2412467	O-RING A(D2*25)	1		
56	2030906	FELT BUSH	1		
57	2054241	FELT	1		
58	2417296	BALL BEARING(6000,2RS)	1		
59	2050640	BEARING COVER	1		
60	2406208	+ PAN M/C SCREW(M4*10)	2		
61	3006015	ROTOR ASS'Y	1		
62	2417057	BALL BEARING(696ZZC2)	1		
63	2412478	RUBBER A	1		
64	2405068	+ PAN TAP SCREW(M3*16)	2		
65	2120252	BEARING CAP	1		
66	3020003	STATOR ASS'Y	1		
67	2110490	REVERSE KNOB	1		
68	2110492	TRIGGER KNOB	1		
69	3119530	TRIG S/W	1		
70	3150090	CONTROLLER ASS'Y	1		
71	2110488	HOUSING R	1		
72	2405140	+PAN TAP SCREW(M4*20)	10		
73	2075138	RUBBER DAMPER	1		
74	2110487	HOUSING L	1		
82	2035914	STOPPER	1		
83	3111674	BATTERY PACK ASS'Y(EU,18V,5.0Ah,NEW,BLACK)	1		
	3111680	BATTERY PACK ASS'Y(EU,18V,5.0Ah,NEW,BLACK,CAP)	1		
84	7736103	LABEL PROFESSIONAL	1		
85	7736102	LABEL BLDC	2		
86	7700326	NAME PLATE	1		
87	7737238	LABEL CAPABILITY	1		
88	2401066	HEX SOC HD BOLT(M4*10,COAT)	1		

\* RSP : Recommended Spare Part

#### PARTS

Item no.	Part no.	Description	Q'ty	RSP (%)	Remark
-	3251713	SIDE HANDLE ASS'Y	1		INCLUD. 75-81
-	3240017	HOUSING SUB ASS'Y	1		INCLUD. 71,74
-	3050536	SCREW KIT ASS'Y	1		INCLUD. 8,39,60,64,72,88

\* RSP : Recommended Spare Part

#### STANDARD ASSESSORIES

Item no.	Part no.	Description	Q'ty	RSP (%)	Remark
	2459060	GREASE TUBE	1		
	3060017	PLASTIC KIT ASS'Y	1		

\* RSP : Recommended Spare Part