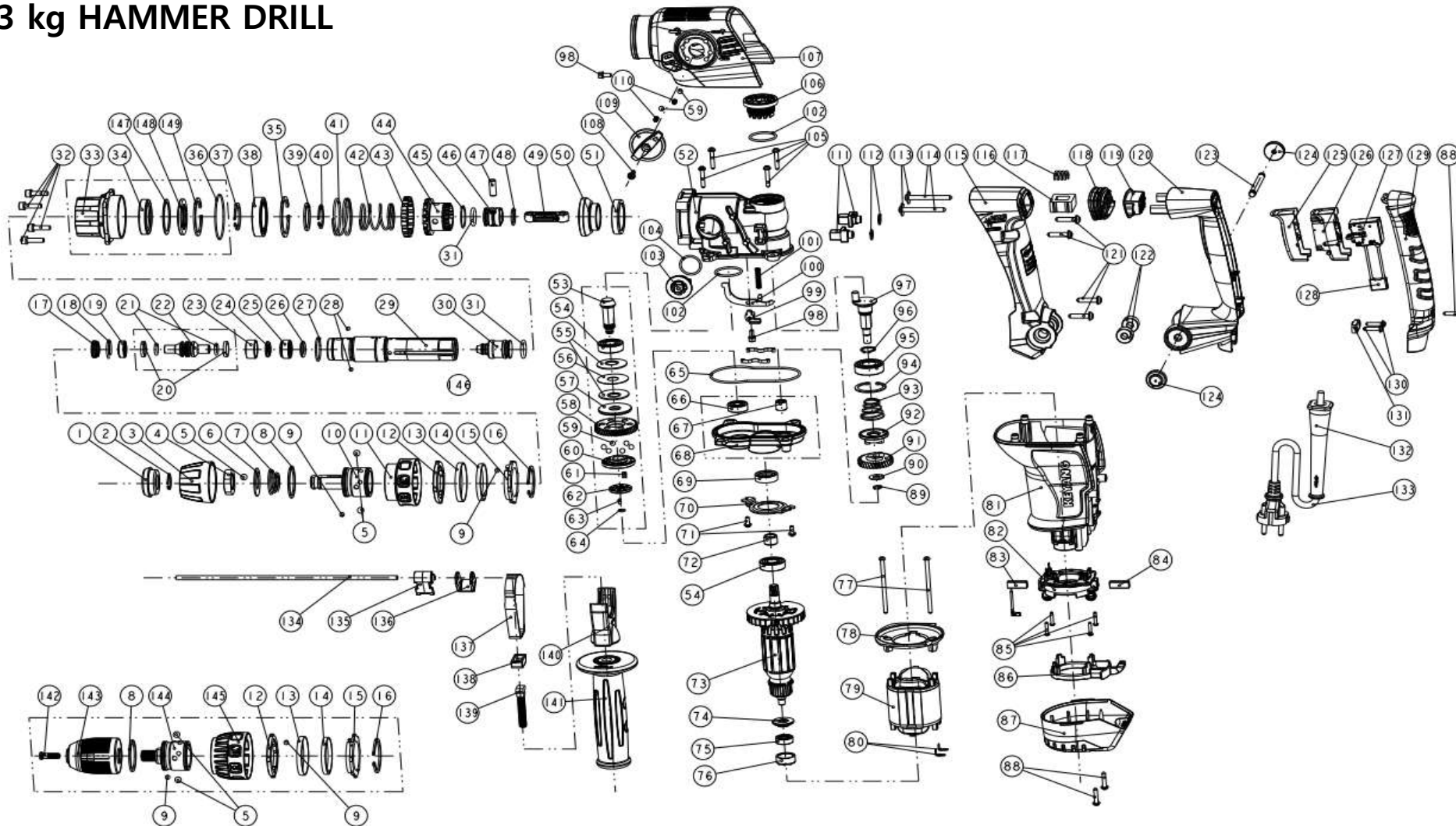


PHD-30



3 kg HAMMER DRILL



PARTS

PHD-30

Item no.	Part no.	Description	Q'ty	RSP (%)	Remark
1	2072619	DUST CAP			
2	2412013	RETAINING RING(D17)			

3	2135087	RETAINER				
4	2200832	HOLDER BUSH				
5	2416028	STEEL BALL(D7)				
6	2065205	BALL SUPPORT PLATE				
7	2411913	TOOL HOLDER SPRING				
8	2412099	SNAP RING(D35)				
9	2416029	STEEL BALL(D5)				
10	2023704	TOOL HOLDER				
11	2135088	QUICK CHANGE COVER				
12	2200831	QUICK CHANGE BUSH				
13	2412458	QUICK CHANGE DAMPER				
14	2065212	LOCATION SPRING				
15	2110911	LOCATION PLATE				
16	2412029	RETAINING RING(D35)				
17	2070548	DAMPER(C)				
18	2064288	RING SPRING(A)				
19	2038205	ANVIL WASHER(B)				
20	2412904	ANVIL RING				
21	2412451	O-RING(A)				
22	2038219	ANVIL				
23	2038217	ANVIL WASHER(A)				
24	2070546	DAMPER(A)				
25	2036529	DAMER BUSH				
26	2070547	DAMPER(B)				
27	2064291	RING SPRING(D)				

* RSP : Recommended Spare Part

PARTS

PHD-30

Item no.	Part no.	Description				Remark
28	2416031	STEEL BALL(D4)				
29	2031018	CYLINDER				
30	2036024	STRIKER				
31	2412452	O-RING(B)				
32	2400929	HEX SOC HD B & SW(SCM4,M5*20,C				
33	2042020	CYLINDER CASE				
34	2413036	OIL SEAL				

35	2412097	RETAINING RING(D47)				
36	2412454	O-RING(D)				
37	2412025	RETAINING RING(D30)				
38	2417965	BALL BEARING(6906C3)				
39	2065210	CLUTCH SPRING WASHER				
40	2412098	RETAINING RING(D26)				
41	2411908	CLUTCH HOLDER SPRING				
42	2411909	CLUTCH SPRING				
43	2110912	CLUTCH HOLDER				
44	2030524	CLUTCH				
45	2064290	RING SPRING(C)				
46	2112710	PISTON				
47	2033814	PISTON PIN				
48	2412457	O-RING(G)				
49	2112711	CONNECTING ROD				
50	2024366	FINAL GEAR(사내),DH-3600L				
51	2200829	METAL BUSH				
52	2041317	CRANK CASE				
53	2024365	SECOND PINION				
54	2417005	BALL BEARING(6001UU)				

* RSP : Recommended Spare Part

PARTS

PHD-30

Item no.	Part no.	Description				Remark
55	2065209	DISK SPRING				
56	2065208	SLIP PLATE				
57	2038207	SAFETY CLUTCH BASE(B)				
58	2200838	SECOND GEAR(S/D)				
59	2416030	STEEL BALL(D5.5)				
60	2200837	SAFETY CLUTCH BASE(A, S/D)				
61	2408025	FEATHER KEY				
62	2038208	LOCK NUT				
63	2406033	HEX SOC SET SCREW(M3*6)				
64	2412381	O-RING(B),DGJ-180FA				
65	2412455	O-RING(E)				
66	2417156	BALL BEARING(608ZZ)				

67	2417309	NEEDLE BEARING(HK0810)				
68	2043472	GEAR COVER				
69	2413034	OIL SEAL				
70	2065204	BEARING COVER				
71	2404301	+PAN HD M/C S & PW(M4*10)				
72	2030352	OIL SEAL BUSH				
73	3001413	A/R ASS'Y(800W,220V,KY),PHD-30A				
74	2131744	DUST PLATE				
75	2417079	BALL BEARING(607ZZ)				
76	2072334	RUBBER PACKING				
77	2405122	+PAN HD S & PW(M4*70)				
78	2131745	FAN GUIDE				
79	3011349	STATOR ASS'Y				
80	2004076	TERMINAL				
81	2141189	HOUSING				

* RSP : Recommended Spare Part

PARTS

PHD-30

Item no.	Part no.	Description				Remark
82	3149198	BRUSH SHIFT ASS'Y				
83	2011402	CARBON BRUSH(AUTO)				
84	2011401	CARBON BRUSH				
85	2405068	+PAN HD TAP SCREW(M3*16)				
86	2131743	REVERSE KNOB				
87	2131746	END COVER				
88	2405125	+PAN HD TAP S & SW(M4*20)				
89	2412037	RETAINING RING(D8)				
90	2060615	WASHER(B)(SK-5,T1*OD16.5),JSV-60				
91	2024363	FIRST GEAR				
92	2200830	DRILLING CLUTCH				
93	2411910	DRILLING CLUTCH SPRING				
94	2412026	RETAINING RING(D32)				
95	2417007	BALL BEARING(6002)				
96	2412010	RETAINING RING(D15)				
97	2021261	CRANK SHAFT				
98	2400902	HEX SOC HD B & SW(SCM4,M4*10)				

99	2110913	CHANGE ROD SUPPORT				
100	2065203	CHANGE ROD				
101	2411911	CHANGE ROD SPRING				
102	2412453	O-RING(C)				
103	2130414	CHANGE LEVER CAM				
104	2412456	O-RING(F)				
105	2405126	+PAN HD TAP S & PW(M4*25)				
106	2155056	OIL CAP				
107	2141531	CRANK CASE COVER				
108	2405104	+PAN HD TAP S & PW(M4*16)				

* RSP : Recommended Spare Part

PARTS

PHD-30

Item no.	Part no.	Description				Remark
109	2130415	CHANGE LEVER				
110	2411912	CHANGE LEVER SPRING				
111	2131727	HANDLE JOINT				
112	2074140	HANDLE JOINT RUBBER				
113	2407072	PLAIN WASHER				
114	2405820	+PAN HD TAP SCREW(M5*50)				
115	2140850	HANDLE(B)				
116	2070533	DAMPER(A)				
117	2411111	DAMPER SPRING				
118	2070550	BELLOWS				
119	2131742	DAMPER HOLDER				
120	2140849	HANDLE(A)				
121	2405167	+PAN HD TAP S & PW(M5*25)				
122	2070552	HINGE DAPMER				
123	2033816	HINGE PIN				
124	2070551	HINGE CAP				
125	2110914	TRIGGER KNOB				
126	2110915	SWITCH SUPPORT				
127	2008310	VARIABLE S/W(DEFOND,DGQ-1106H,250V)				
128	2012295	CAPACITOR ASS'Y				
129	2141851	HANDLE COVER				
130	2405105	+PAN HD TAP S& PW(M4*20)				

* RSP : Recommended Spare Part

A/S ASSEMBLY PARTS

PHD-30

Item no.	Part no.	Description				Remark
-	3250078	ANVIL ASS'Y(A/S)				Incl. 20-22
-	3250043	CRANK CASE SUB ASS'Y(A/S)				Incl. 51, 52
-	3250044	GEAR COVER SUB ASS'Y(A/S)				Incl. 66, 67, 68
-	3050532	SCREW KIT ASS'Y				Incl. 2, 8 ,16, 18, 27, 32, 35, 37, 40, 45, 61, 63, 71, 77, 85, 88, 89, 94, 96, 98, 105, 108, 114, 121, 130, 143, 149
	3101052	ADAPTER TOOL HOLDER ASS'Y				Incl. 5, 8, 9, 12-16, 142-145

STANDARD ASSESSORIES

PHD-30

Item no.	Part no.	Description				Remark
-	2459060	GREASE TUBE				
123	2035912	STOPPER				
-	3050806	PLASTIC KIT ASS'Y(230V,50HZ),PHD-30				

* RSP : Recommended Spare Part