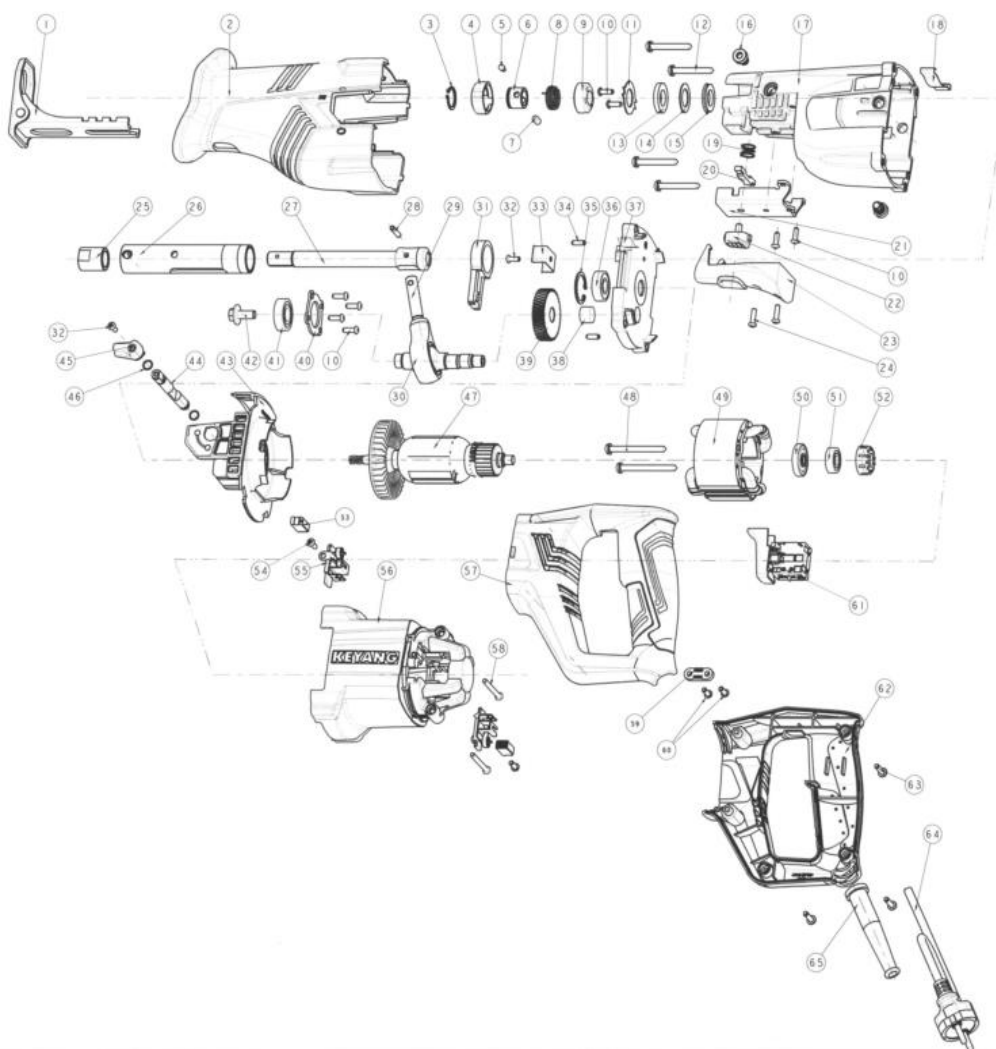


# 1. RECIPROCATING SAW, RS-1300

0001-1506



Level	Part No.	Part Name	Spec.	Unit	Q'ty
0	8156004	Reciprocating Saw (荷兰KEM) , RS1300	BR,CE,220-240V	ST	1
1	3100128	FOOT ASSY ,RS1300 [锯片导向板]	rivet 工程	EA	1
2	2071814	BOOT,RS1300 [绝缘护套]	TPE	EA	1
3	2412107	RETAINING RING C SHAFT 18,RS1300 [卡簧]	DRIVING SLEEVE 18	EA	1
4	2031025	DRIVING SLEEVE,RS1300 [驱动套筒]	Φ26X12	EA	1
5	2038353	SHOULDER PIN,RS1300 [肩部销]	Φ5X8.7	EA	1
6	2031024	PIN HOLDER,RS1300 [销座]	Φ18X14	EA	1
7	2031023	CLAMP PIN,RS1300 [锁紧销]	Φ5.5X10.8	EA	1
8	2411987	TORSION SPRING,RS1300 [扭簧]	PW2	EA	1
9	2120117	SPRING GUIDE,RS1300 [衬套]	PA6-GF33	EA	1
10	2405430	+PAN HD M/C S and SW M4*12, DG-850B	螺丝头样式变更型 M4*12 BLACK	EA	8
11	2050648	FELT WASHER,RS1300 [垫圈]	T0.5X35.5	EA	1
12	2405181	+PAN HD TAP S S/W,RS1300 [螺丝]	M5x40(2TYPE)	EA	4
13	2054304	HOLDER FELT,RS1300 [羊毛垫圈]	WOOL	EA	1
14	2050647	HOLDER WASHER,RS1300 [支撑垫片]	T0.8XΦ25.4	EA	1
15	2071815	SEAL PACKING,RS1300 [橡胶圈]	FKM	EA	1
16	2400097	HINGE BOLT,RS1300 [铰接螺栓]	SM45C	EA	2
17	2044707	GEAR COVER,RS1300 [齿轮罩]	ALDC8	EA	1
18	2411989	ORBITAL SPRING,RS1300 [板簧]	T0.5	EA	1
19	2411988	BUTTON SPRING,RS1300 [压簧]	PW2	EA	1
20	2200859	FOOT PIN,RS1300 [脚销]	SMF5040	EA	1
21	2050646	FOOT GUIDE,RS1300 [支撑板]	T2.3	EA	1
22	2110482	FOOT BUTTON (ORANGE),RS1300 [按钮]	PA6-GF33	EA	1
23	2120116	BUTTON GUIDE,RS1300 [按钮盖]	PA6-GF33	EA	1

24	2405074	+PAN HD TAP SCREW M4*14, DG-100B2	M4*14 2TYPE BLACK PB/W	EA	2
25	2200860	HOLDER BUSH,RS1300 [HOLDER BUSH,RS-	SBF4118	EA	1
26	2031026	SLIDER HOLDER,RS1300 [滑块支撑架]	fight毛培加工研讨	EA	1
27	2031027	SLIDER,RS1300 [滑块]	Φ19.9X134.6	EA	1
28	2038354	CONNECT PIN,RS1300 [连接销]	Φ4X19.3	EA	1
29	2031028	SWASH BEARING SHAFT,RS1300	Φ10X34	EA	1
30	2417844	SWASH BEARING,RS1300 [摆杆轴承]	LFB	EA	1
31	3240335	ORBITAL ROD ASSY ,RS1300 [轨道杆组件]	Φ4 rivet 工程	EA	1
32	2404118	+PAN HD M/C SCREW M4*10 DG-100B	M4*10 COAT 镀白锌	EA	2
33	2065316	HOLDER GUIDE PLATE,RS1300 [导向板]	STC5, T=0.5	EA	1
34	2038355	INNER COVER PIN,RS1300 [内罩销]	Φ4X12	EA	2
35	2400037	RETAINING RING (D26) PG-600B	D26 孔用	EA	1
36	2417296	BALL BEARING 6000DDW LFK PHD-283B	6000DDW LFK 游隙3~8μm	EA	1
37	2044708	INNER COVER,RS1300 [内罩]	ALDC8	EA	1
38	2417408	Needle bearing,RS1300 [滚针轴承]	BK1010	EA	1
39	2024385	GEAR,RS1300 [齿轮]	20CrMo, Z=46 M=0.9	EA	1
40	2050649	BEARING COVER,RS1300 [轴承盖]	T1.5	EA	1
41	2417991	BALL BEARING 6001 2RS LFB,DG-850	6001 2RS H2012-2/C11-25 LFB	EA	1
42	2402038	FLANGE BOLT CS-7CB [法兰螺栓]	SCM440 M7*16,六角	EA	1
43	2110483	FAN GUIDE (BROWN),RS1300 [导风圈]	PA6-GF33	EA	1
44	2038742	ORBITAL PIN,RS1300 [轨道销]	Φ9x83.7	EA	1
45	3150089	ORBITAL LEVER ASSY(ORANGE),RS1300	ORANGE	EA	1
46	2071816	O-RING,RS1300 [密封圈]	OD19XΦ1, NBR	EA	2
47	3000064	ARMATURE ASSY,RS1300 [[转子组件]]	φ0.47*17T/18T	EA	1
48	2405120	自攻螺丝 [自攻螺丝]	M5*55	EA	2
49	3010061	STATOR ASSY,RS1300 [[定子组件]]	φ0.6*135T	EA	1
50	2120255	[SZ]DUST COVER,TC-110B [防尘盖]	PA6 GF33Percent	EA	1
51	2417909	BALL BEARING DMV-570 [球轴承]	608 R LLB T TN9 A3 C5/10 V2	EA	1
52	2072332	RUBBER PACKING [RUBBER PACKING]	PHD-40M	EA	1
53	2011091	CARBON BRUSH, DG-150B [碳刷]	L26F13	EA	2
54	2404120	+PAN HD M/C SCREW,RS1300 [螺丝]	M4x14	EA	2
55	3149225	BRUSH HOLDER ASSY,RS1300 [碳刷架组件]	组合件	EA	2
56	2110481	HOUSING (BROWN),RS1300 [机壳]	PA6-GF33, 丝印	EA	1
57	2110484	HANDLE(LEFT, BROWN),RS1300	PA6-GF33	EA	1
58	2405180	+PAN HD TAP SCREW,RS1300 [螺丝]	M4X40(2TYPE)	EA	2
59	2130507	CORD CLIP, DG-100B [电源线夹]	PA6	EA	1
60	2405075	+PAN HD TAP SCREW M4*12, ACT-100M [螺丝]	M4*12 2TYPE YELLOW	EA	2
61	2008141	TRIG. S/W(JIABEN, NO LOCK, ORANGE),RS1	220V~240V 60Hz, NO Lock	EA	1
62	2110485	HANDLE(RIGHT, BROWN),RS1300 [手柄 (右	PA6-GF33	EA	1
63	2405156	+PAN HD TAP S PW M4*18 [螺丝]	M4 *18 BLACK 2型	EA	3
64	3110173	CORD ASSY(EXPORT) DG-851 [电源线组件]	220V,H05RN-F,2C*1.0*2500	EA	1
65	2070331	CORD ARMOR DG-100B [电源线护套]	INSERT型 PVC 4mm ? 7.2	EA	1