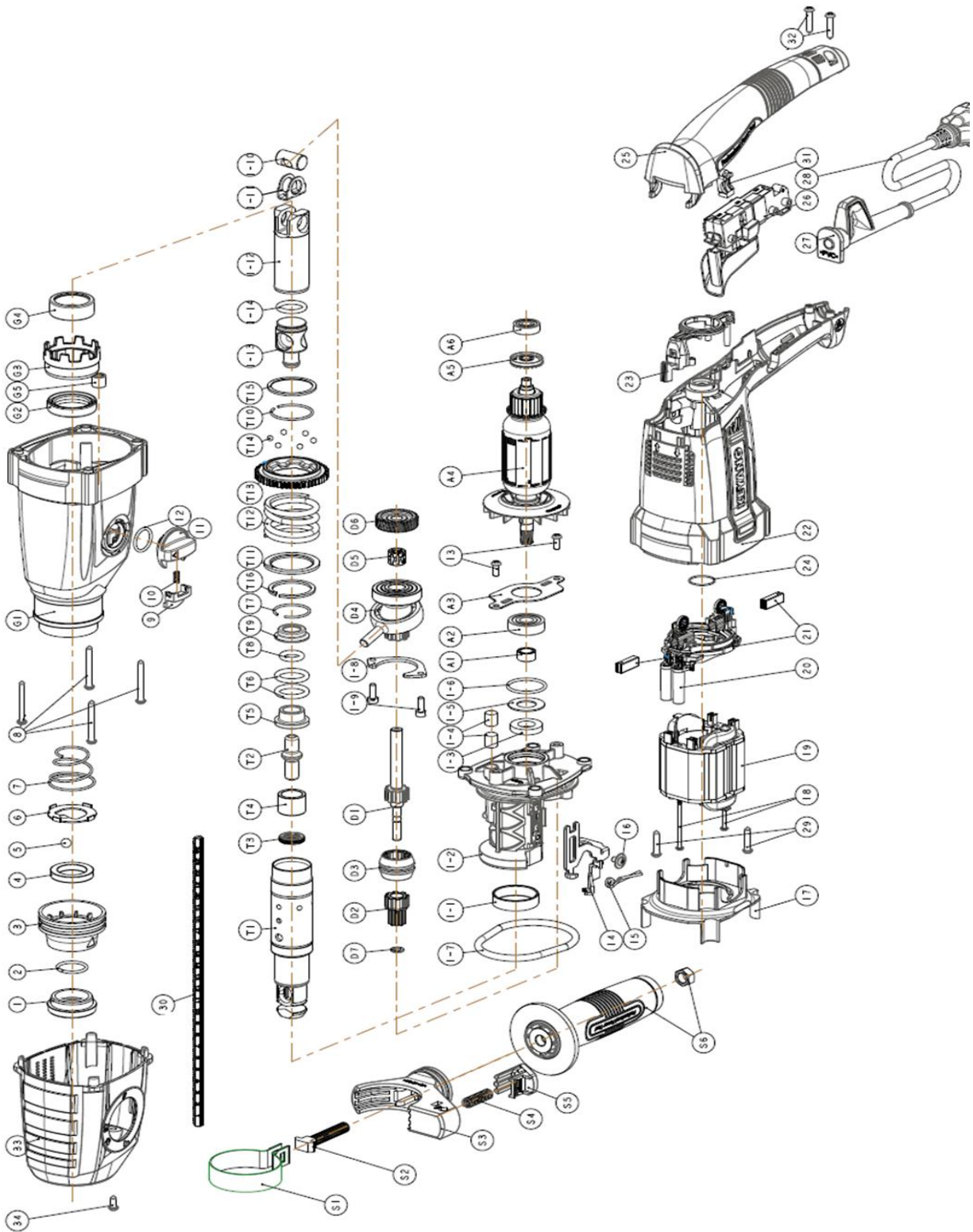


HT26-2T (8071002)



**2kg Hammer Drill HT26-2T 8071002 (EU,CE)**

Item no.	Part no.	Description	RSP (EA)	Remark
1	2070283	DUST CAP		
2	2064294	HOLDER RING	5	
3	2111006	TOOL HOLDER COVER		
4	2030044	HOLDER BUSH	3	
5	2416023	STEEL BALL(7.14MM)	5	
6	2064266	BALL SUPPORT PLATE	2	
7	2411883	SPRING(B)		
8	2400055	+PAN HD TAP SCREW M4*38		
	3150296	CHANGE LEVER MODULE	5	Include #9~12
9	2110997	LOCK BUTTON		
10	2030624	LOCK BUTTON SPRING		
11	2110998	CHANGE LEVER		
12	2412477	O-RING(CHANGE LEVER)		
13	2404118	+PAN HD M/C SCREW M4*10		
14	2050541	CLUTCH PLATE	5	
15	2030633	PLATE SPRING	5	
16	2400512	+PAN HD M/C SCREW M4*6		
17	2111005	FAN GUIDE		
18	2400511	+PAN HD TAP SCREW M3*55		
19	3010129	STATOR ASSY	5	
20	3250393	BRUSH SHIFT ASSY	5	
21	2011798	CARBON BRUSH	10	
22	2111004	HOUSING	3	
23	2111003	BRUSH SHIFT LEVER	5	
24	2070345	O-RING(REAR BEARING)		
25	3140478	HANDLE COVER ASSY	2	
26	2008253	TRIG. S/W	5	
27	2070358	CORD ARMOR(Φ9)	3	
28	3112290	CORD ASS'Y	5	
29	2405155	+PAN HD TAP S & PW(M4*20)		
30	2111002	STOPPER		
31	2111447	CORD CLIP		
32	2405155	+PAN HD TAP S & PW(M4*20)		
33	2111189	GEAR COVER BOOT		
34	2400267	+PAN HD TAP SCREW(M4*10)		
	3140585	GEAR COVER SUB ASS'Y	2	Include #G1~G5
G1	2111008	GEAR COVER		
G2	2070296	OIL SEAL(D25*35*8 FKM)		
G3	2417240	NEEDLE BEARING (HK2512)		
G4	2030629	NEEDLE BEARING HOUSING		
G5	2417381	NEEDLE BEARING(HK0609)		
	3101016	TOOL HOLDER SUB ASS'Y	5	Include #T1~T16
T1	2030622	TOOL HOLDER		
T2	2030640	ANVIL		

**2kg Hammer Drill HT26-2T 8071002 (EU,CE)**

Item no.	Part no.	Description	RSP (EA)	Remark
T3	2070534	ANVIL DAMPER		
T4	2030714	ANVIL BUSH		
T5	2030620	DAMPER BUSH (A)		
T6	2412434	O-RING(DAMPER)		
T7	2064265	DAMPER RING SPRING		
T8	2412433	O-RING(CATCHER)		
T9	2030627	DAMPER BUSH (B)		
T10	2064264	GEAR RING SPRING		
T11	2050533	SAFETY CLUTCH WASHER		
T12	2030632	SAFETY CLUTCH SPRING		
T13	2024468	FINAL GEAR		
T14	2030260	STEEL BALL(D4)		
T15	2050542	METAL BUSH WASHER		
T16	2412103	UNIFORM SECTION RING(D30)		
D1	2020690	DRIVING SHAFT	5	
D2	2024387	SECOND GEAR	5	
D3	2030630	CLUTCH	5	
D4	2417829	SWASH BEARING	3	
D5	2417383	NEEDLE BEARING(CAGE,IKO,KT8X11 DW)	3	
D6	2024379	FIRST GEAR	3	
D7	2050535	SECOND GEAR WASHER	3	
I-1	2030628	METAL BUSH		
I-2	2040224	INNER COVER	2	
I-3	2054240	BEARING FELT		
I-4	2418141	FELT		
I-5	2050209	FELT WASHER		
I-6	2412467	O-RING(A)(D2*25)		
I-7	2070284	O-RING(INNER COVER)		
I-8	2050589	BEARING COVER(A)		
I-9	2400514	HEX SOC HD BOLT & SW (M4*12)		
I-10	2033812	PISTON PIN		
I-11	2030623	PISTON PIN WASHER	3	
I-12	2030621	PISTON	3	
I-13	2030626	STRIKER	2	
I-14	2412472	O-RING(STRIKER)	3	
A1	2200174	FELT BUSH		
A2	2417496	BALL BEARING(6000 2RS A1)	5	
A3	2050534	BEARING COVER (B)		
A4	3000123	ARMATURE ASSY	5	
A5	2111007	DUST PLATE	5	
A6	2417990	BALL BEARING(607 2RS LFB)	5	
	3140586	SIDE HANDLE ASSY	3	Include #S1~S6
S1	2051508	BAND		
S2	2030087	T-BOLT(M8*40)		

**2kg Hammer Drill HT26-2T 8071002 (EU,CE)**

Item no.	Part no.	Description	RSP (EA)	Remark
S3	2111011	BAND HOLDER		
S4	2411976	STOPPER HOLDER SPRING		
S5	2111000	STOPPER HOLDER		
S6	2110999	SIDE HANDLE		
	7738437	MODEL NAME LABEL(L)		
	7738444	MODEL NAME LABEL(R)		
	7738436	NAME PLATE(꺾)		
	7739476	SIDE STICKER R		
	7739475	SIDE STICKER L		